



# HAYES MANSION

SAN JOSE

---

**CURIO COLLECTION**  
by Hilton™

200 Edenvale Avenue, Sa Jose, CA 95136

[HayesMansion.com](http://HayesMansion.com)

(408) 226-3200



## Hayes Mansion Quick Stats

The Hayes Mansion is not your typical box hotel. Built in 1905, this was once a lavish private estate. It is now a state of the art meeting/event/conference/hotel facility that offers a unique experience for all. We invite you to get out of the box.....and **experience a hotel where your events will make history.**

- 214 Guestrooms: 119 Singles, 95 Double Queens, 24 Suites
- 25,000 sq. ft. of meeting space/ 6,600 sq. ft. Ballroom
- 20,000 sq. ft. of outdoor event space with large lawn area
- Ranked 5 out of 77 hotels in San Jose on Trip Advisor
- Hilton Honors Points
- 9 miles from San Jose International Airport
- 7 miles to Downtown San Jose
- Free Wi-Fi and Parking
- Large 24 hour Fitness Center
- Next to a 20 acre park with Tennis Courts, Trails, and more



**HAYES MANSION**  
SAN JOSE

**CURIO COLLECTION**  
by Hilton™

200 Edenvale Avenue, San Jose, CA 95136  
HayesMansion.com (408) 226-3200

### Airports

San Jose Airport (SJC) - 11 mi  
Oakland Airport (OAK) - 49 mi  
San Francisco Int'l Airport - 50 mi

### Universities

San José State University - 6.5 mi  
Santa Clara University - 10 mi  
Stanford University - 28 mi

### Sports Stadiums

Silver Creek Sportsplex - 3.4 mi  
SAP Center - 9 mi  
Avaya Stadium - 10.7 mi  
Levi's Stadium - 16 mi

### Attractions

Happy Hollow Parks & Zoo - 6 mi  
McEnery Convention Center - 6.4 mi  
Children's Discovery Museum - 6.7 mi  
Tech Museum of Innovation - 6.7 mi  
Downtown San Jose - 6.8 mi  
Raging Waters San Jose - 7 mi  
Downtown Campbell - 9.3 mi  
Casino M8trix - 10.6 mi  
Winchester Mystery House - 11 mi  
California's Great America - 15.7 mi  
Downtown Los Gatos - 16 mi  
Apple Campus - 18 mi  
NASA Ames Research Center - 20 mi  
Googleplex - 21 mi  
Shoreline Amphitheatre - 23 mi





HAYES MANSION  
SAN JOSE

CURIO COLLECTION  
by Hilton™

200 Edenvale Avenue, San Jose, CA 95136  
HayesMansion.com (408) 226-3200

\*Sample fares are estimates only and do not reflect variations due to discounts, traffic delays or other factors. Actual fares may vary. You agree to pay the fare shown upon confirming your ride request. If your route or destination changes on trip, your fare may change based on the rates above and other applicable taxes, tolls, charges and adjustments. Subject to Lyft's Terms of Service.

The Home Depot

Lyft Fee: \$6\*

Cha Cha Sushi

Lyft Fee: \$6\*

#### MAP KEY

- Shopping
- Dining
- Parks

#### Westfield Oakridge

##### Shopping

Apple Store  
Charlotte Russe  
Disney Store  
Express  
Forever 21

##### Dining

The Cheesecake Factory  
Chipotle  
Jamba Juice  
Starbucks  
Wetzel's Pretzels

To view all shops and dining options please visit their website: [westfield.com/oakridge](http://westfield.com/oakridge)

Hayes Mansion San Jose

Silver Creek Sportsplex

Lyft Fee: \$6\*

TacoMania

Lyft Fee: \$6\*

Monterey Plaza

Lyft Fee: \$6\*

Bill's Cafe

Lyft Fee: \$6\*

Target

Lyft Fee: \$6\*

Starbucks

Lyft Fee: \$6\*

Marshalls

Lyft Fee: \$6\*

Bonefare Market

Lyft Fee: \$6\*

Michael's

Lyft Fee: \$6\*

Marie Callender's

Lyft Fee: \$6\*

Aqui Blossom Valley

Lyft Fee: \$6\*

Sunrise Plaza Shopping Center

Lyft Fee: \$6\*

Buffalo Wild Wings

Lyft Fee: \$6\*

In-N-Out Burger

Lyft Fee: \$6\*

Olive Garden

Lyft Fee: \$6\*

The Fish Market

Lyft Fee: \$6\*

BJs Brewhouse

Lyft Fee: \$6\*



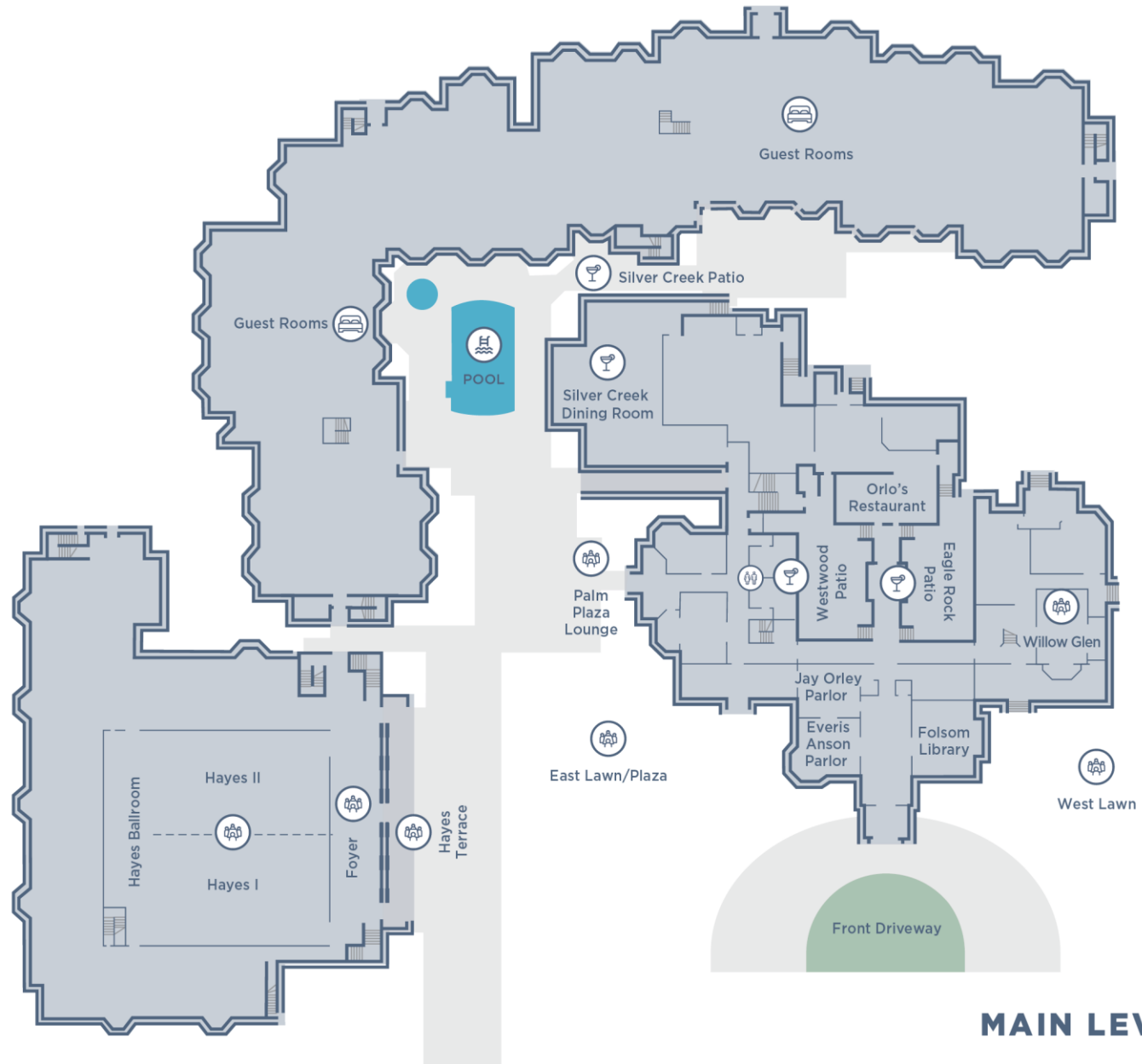
# HAYES MANSION SAN JOSE

**CURIO COLLECTION**  
by Hilton™

200 Edenvale Ave  
San Jose, CA 95136

(408) 226-3200

HayesMansion.com



**MAIN LEVEL**



# HAYES MANSION SAN JOSE

**CURIO COLLECTION**  
by Hilton™

200 Edenvale Ave  
San Jose, CA 95136

(408) 226-3200

[HayesMansion.com](http://HayesMansion.com)



**LOWER LEVEL**



HAYES MANSION  
SAN JOSE

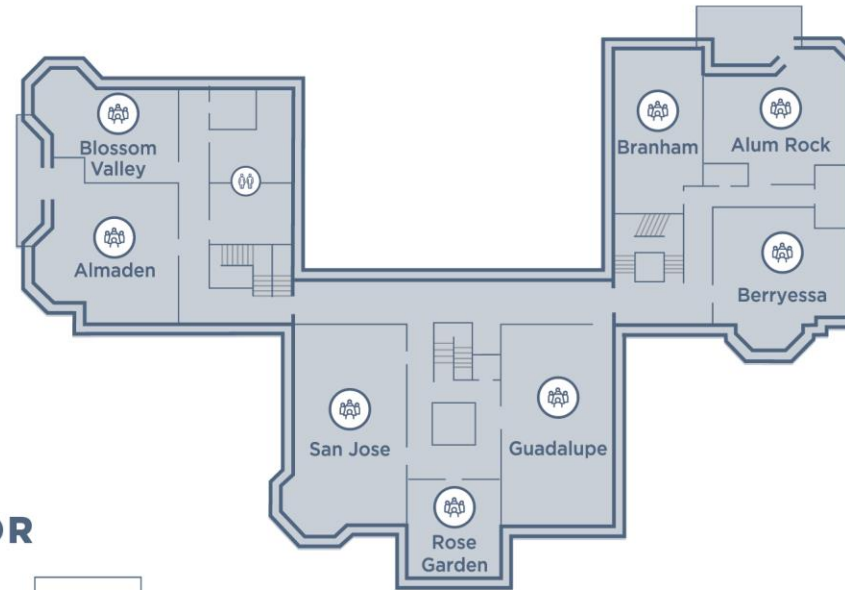
**CURIO COLLECTION**  
by Hilton™

200 Edenvale Ave  
San Jose, CA 95136

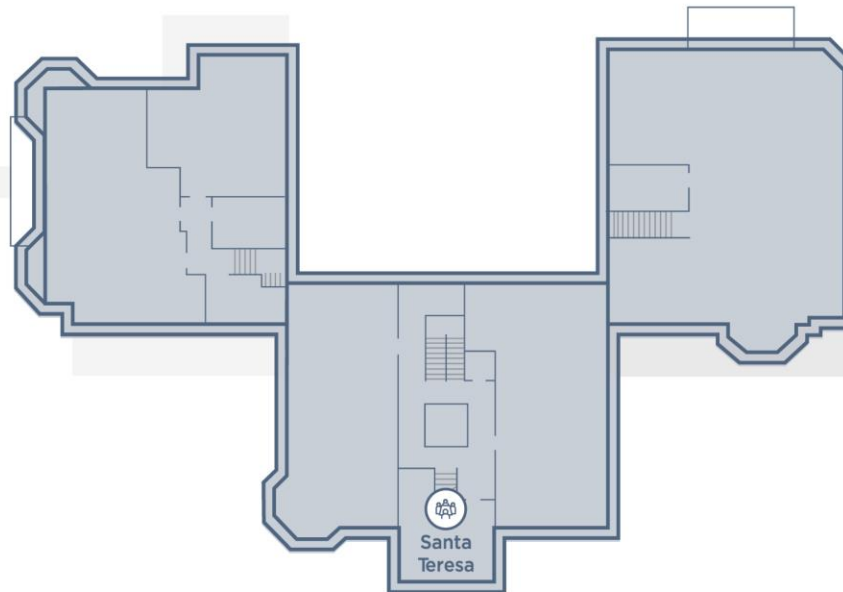
(408) 226-3200

HayesMansion.com

## MANSION 2ND FLOOR



## MANSION 3RD FLOOR



	Room Name	Dimensions	Ceiling Height	Sq. Ft.	Reception	Banquet	Theater	Classroom	U-Shape	H-Square	Boardroom
					/Physical Distancing	/Physical Distancing	/Physical Distancing	/Physical Distancing	/Physical Distancing	/Physical Distancing	
MAIN LEVEL	Hayes Ballroom	87' x 76'	19' 10"	6,600	750/180	500/96	650/88	321/36	87/21	120/30	74
	Hayes 1	43' x 70'	19' 10"	3,010	280/90	240/48	300/44	150/18	60/16	80/20	64
	Hayes 2	44' x 70'	19' 10"	3,310	280/90	240/48	300/44	150/18	60/16	80-20	64
	Hayes Foyer	20' x 95'	19' 10"	1,900	300/50	180	-	-	-	-	-
	Hayes Ballroom Terrace	32' x 162	-	3,224	520/117	312/88	-	-	-	-	-
	Hayes Terrace	13' x 47'	-	611	60/16	20/8	-	-	-	-	-
	East Lawn	171' x 119'	-	20,349	1,500/550	700/240	-	-	-	-	-
	Palm Patio	40' x 70'	-	2,800	120/77	80	288	-	-	-	-
	Palm & Ember Restaurant	44' x 50'	11'	2,000	-	160	-	-	-	-	-
	Silver Creek Patio	69' x 50'	-	3,450	120/80	80/32	-	-	-	-	-
	Westwood Patio	29' x 65'	-	1,885	150/50	80/24	110/23	-	-	-	-
	Willow Glen	19' x 30'	11'	570	60/16	40/16	60/12	24/8	18/5	22/6	22
	EA Parlor	21' x 23'	11'	480	50	40	60	20	16	18/16	16
	JO Parlor	19' x 20'	11'	380	30	20	30	16	12	14/14	14
	Orlo's	27' x 48'	11'	1,296	80/36	60/20	-	-	-	-	-
	Orlo's Conservatory	19' x 10'	11'	190	30/6	-	-	-	-	-	-
	Eagle Rock Patio	29' x 65'	-	540	40/15	30/12	-	-	-	-	-
LOWER LEVEL	LOWER LEVEL										
	Edenvale	49' x 62'	11'	3,038	280/84	200/60	350/48	140/19	59/16	78/20	50
	Edenvale Foyer	30' x 63'	10'	1,260	150/35	200	-	-	-	-	-
	Chynoweth	32' x 49'	10'	1,568	150/44	90/28	150/27	70/12	40/12	44/14	35
	Lower Level Lobby Foyer	22' x 95'	12'	2,090	200/60	200	-	-	-	-	-
	Monterey	37' x 48'	12'	1,776	160/50	90/24	200/20	90/15	44/11	50/14	32
	San Martin	28' x 54'	12'	1,512	150/42	90/21	150/23	80/17	40/12	44/14	40
	Morgan Hill	29' x 45'	12'	1,305	120/36	80/24	95/15	65/10	32/10	40/12	32
	Live Oak	22' x 30'	12'	660	50/18	40/16	60/11	24/7	18/6	21/8	20
	Madrone	22' x 30'	12'	660	50/18	40/16	60/11	24/7	18/6	21/8	20
	San Juan Bautista	22' x 29'	12'	638	30/18	30/12	50/11	26/7	16/6	18/8	14
	Coyote Creek	30' x 73'	10'	2,190	75/60	-	-	-	-	-	-
MANSION	2ND FLOOR										
	San Jose	24' x 45'	10'	1,180	80/30	60/24	110/19	56/10	34/9	38/10	36
	Guadalupe	24' x 45'	10'	1,180	80/30	70/24	110/23	56/10	34/10	38/12	36
	Almaden	22' x 33'	10'	726	60/20	50/16	70/12	30/7	22/7	26/8	22
	Branham	19' x 36'	10'	684	70/19	40/12	65/11	32/7	24/7	28/8	22
	Alum Rock	18' x 34'	10'	612	65/17	40/16	65/12	28/6	24/9	288/8	22
	Picture Gallery	8' x 72'	10'	576	35	-	-	-	-	-	-
	Berryessa	22' x 25'	10'	550	53/15	40/16	70/13	28/7	24/7	28/8	22
	Blossom Valley	18' x 27'	10'	486	40/13	20/12	50/10	22/4	18/5	20/6	20
	Rose Garden	19' x 20'	10'	380	-	-	-	-	-	-	12
	3RD FLOOR										
	Santa Teresa	15' x 19'	10'	285	15/8	10/4	20/4	12/3	10/3	12/4	12

## Meetings & Events

Our unique environment and offerings help foster engagement, retention, collaboration and innovation. This will be an event you and your attendees will never forget.

- Day Meeting Packages available
- Ergonomic or Flex Back Banquet Chairs
- Creative and Healthy Cuisine
- Large outdoor space, perfect for teambuilding and fresh air during breaks
- Wired/Wireless Internet – 10Mbps bandwidth, burstable to 100 Mbps
- 6,600 sq. ft. Ballroom with 24 ft. Ceilings
- 24 Meeting Rooms
- “Speakeasy” with 2 pool tables, 4 poker tables, dartboard, and full bar
- Dedicated Meeting Concierge



## Team Building

- We partner with professional teambuilding companies that can create custom programs based on your organization's needs
- Charitable/Corporate Social Responsibility teambuilding projects are also available
- Food Truck Challenge- create a concept, plan a menu, and execute a dish
- Movie Making Madness- create a 5 minute movie to wow your colleagues
- Drone Decathlon- build a drone and compete in a variety of challenges
- Zombie Hunt- track a horde of zombies, search for supplies, and use a nerf gun for protection
- GPS Scavenger Hunt, Wine Blending Contest and much more....

## Experiential Breaks/Events

- 10 minute mindfulness meditation
- Yoga/Stretching breaks
- Reinvigorating walk through the park
- Gaming breaks that include: Cornhole, Giant Jenga, Disk Golf, Giant Pong, Frisbee, Squirt Gun Target Practice, Bocce Ball...and much more
- Stress reduction classes
- Cooking classes for the busy individual featuring quick, healthy recipes
- Rock Climbing Wall
- RC Car Races around the driveway
- Mixology classes in our "Speakeasy"
- Pop up Art Gallery
- Doodle/Creativity Stations

# Our Commitment Together

## Staff

Enhanced Training  
Personal Protection Equipped  
Daily Health Screenings

## Physical Distancing

Signage and set ups to maintain Physical Distance  
Large outdoor space makes it easy to distance comfortably

## Cleanliness

EcoLab Partnership  
CDC Compliant  
Hilton CleanStay Program

## Meetings/Events

Set ups to maintain physical distance  
Mapped out space for efficient traffic flow  
Staff served Buffet and Coffee Stations  
Individually Prepared Meal options  
Virtual and Hybrid Virtual event options available

<b>VIDEO CONFERENCE</b> The holding of a conference among people at remote locations by means of transmitted audio and video signals. 	<b>WEBCAST</b> A video broadcast of an event transmitted over the internet. A webcast has traditionally been a one-way push of content from an event to anyone that has the link to watch online. 
<b>AUDIO CONFERENCE</b> A conference in which people at different locations speak to each other via telephone or internet. 	<b>WEB CONFERENCE/WEBINAR</b> A webinar is an online meeting or presentation held via the internet in real-time. The main feature of live webinars is interactivity, or the ability to discuss, send and receive information in real-time. 
<b>HYBRID EVENT</b> A hybrid event is a tradeshow, conference, seminar, workshop or other meeting that combines a "live" in-person event with a "virtual" online component. 	

©2020 PSAV. All Rights Reserved.

**PSAV**

## Virtual Site Visits

Video Walkthroughs  
Live walkthrough with sales professional  
Variety of options available

For a complete list of our enhanced measures, please request from your sales professional



## Meeting Promotions

Book before December 31st, 2020 and “Pick your Perk”

### SPEND OVER \$5,000 PICK THREE PERKS:

- TWO SUITE UPGRADES
- DISCOUNTED MEETING SPACE (UP TO \$500 PER DAY)
- 2% REBATE TO THE MASTER ACCOUNT
- 5% OFF AUDIOVISUAL\*
- 50% OFF ONE MORNING OR AFTERNOON BREAK
- ONE-HOUR WELCOME RECEPTION\*
- DOUBLE HONORS POINTS

### SPEND OVER \$10,000 PICK FOUR PERKS:

- THREE SUITE UPGRADES
- DISCOUNTED MEETING SPACE (UP TO \$750 PER DAY)
- 3% REBATE TO THE MASTER ACCOUNT
- 10% OFF AUDIOVISUAL\*\*
- ONE COMPLIMENTARY MORNING OR AFTERNOON BREAK
- ONE-HOUR WELCOME RECEPTION\*
- TRIPLE HONORS POINTS

Groups must be contracted prior to December 31, 2020, and consumed by December 31, 2021, to qualify. This offer does not apply to previously booked groups and cannot be combined with any other offers. Room thresholds are based on total actualized guest room revenue. Should a contracted group under this offer cancel or change dates, the contracted perks may not be available under new set of dates. \*One hour Welcome reception will include the hotel's choice of beer, wine, food and/or hors d'oeuvres. Hotel will select location of welcome reception. Welcome reception will be provided for up to the amount of guests rooms on peak night\*\*Audiovisual discount applies when using PSAV as the exclusive provider. Complimentary break is hotel's choice of items and will be provided for up to the amount of guestrooms on peak night. Offer valid with group blocks of 25 rooms or more for a two night minimum stay